

Hand made
Amber jewellery
catalogue



Hand made Amber jewellery

c a t a l o g u e

Amber Marcin Buzalski is a Polish Family Company producing amber and silver jewellery since 1989.
It is my pleasure to introduce our New Catalogue. In this book You will find Hand Made Jewellery made of amber and silver.

For most of the earrings You can choose from hooks and studs listed below



H002
0,9g



ENG01
1,4g



ENG02
2,3g



ENG03
1,4g



ENG04
1,5g



ENG05
1,0g



STD01
1,2g



STD02
1,0g



STD03
0,9g



CHP



FEDERING

For all the bracelets and necklaces you can choose from the following locks

Sincerelly
Marcin Buzalski, Owner

Ca 21,0g
 HM/6201/BC



Ca 12,0g
 HM/6201/P



Ca 12,0g
 HM/6201/R



Ca 5,7g
 HM/6201/ER



Ca 10,0g
 HM/6202/P



Ca 12,0g
 HM/6202/R





Ca 11,0g
HM/6203/R



Ca 10,0g
HM/6203/P



Ca 11,0g
HM/6203/ER



Ca 20,0g
HM/6203/BC



Ca 18,0g
HM/6204/P



Ca 28,0g
HM/6204/BC

Ca 20,0g
 HM/6205/BC



Ca 8,0g
 HM/6205/P



Ca 15,0g
 HM/6206/BC



Ca 10,0g
 HM/6206/ER



Ca 6,0g
 HM/6206/P



Ca 8,0g
 HM/6206/R





Ca 11,0g
HM/6207/ER



Ca 17,0g
HM/6207/BC



Ca 10,0g
HM/6207/R

Ca 8,0g
HM/6207/P



Ca 10,0g
HM/6208/BR



Ca 10,0g
HM/6208/P

Ca 8,0g
 HM/6209/P



Ca 10,0g
 HM/6209/R



Ca 8,0g
 HM/6210/ER



Ca 8,0g
 HM/6210/R



Ca 8,0g
 HM/6210/P



Ca 16,0g
 HM/6210/BC





Ca 28,0g
 HM/6211/BC1



Ca 9,0g
 HM/6211/ER



Ca 7,0g
 HM/6211/P



Ca 8,0g
 HM/6211/R



Ca 15,0g
 HM/6211/BC2

Ca 14,0g
HM/6212/P



Ca 13,0g
HM/6212/R



Ca 8,0g
HM/6213/P



Ca 33,0g
HM/6213/N



Ca 12,0g
HM/6213/R



Ca 9,0g
HM/6214/R



Ca 3,9g
HM/6215/ER



Ca 3,2g
HM/6215/P



Ca 11,0g
HM/6214/ER

Ca 8,0g
HM/6214/P



Ca 16,0g
HM/6214/BC



Ca 9,0g
HM/6216/P



Ca 9,0g
HM/6217/R



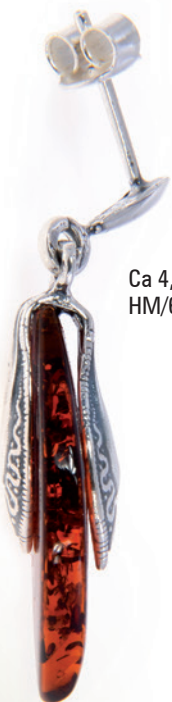
Ca 9,0g
HM/6217/P



Ca 9,0g
HM/6217/R



Ca 18,0g
HM/6216/BR



Ca 4,0g
HM/6218/ER



Ca 2,0g
HM/6218/P





Ca 11,0g
 HM/6219/ER



Ca 12,0g
 HM/6219/P



Ca 10,0g
 HM/6219/R



Ca 19,0g
 HM/6219/BC1



Ca 29,0g
 HM/6219/BC2



Ca 7,0g
 HM/6220/R



Ca 11,0g
 HM/6220/P



Ca 17,0g
 HM/6220/BR



Ca 22,0g
 HM/6220/BC1



Ca 14,0g
 HM/6220/BC2



Ca 23,0g
 HM/6221/BC



Ca 38,0g
 HM/6221/N



Ca 20,0g
 HM/6222/BC



Ca 38,0g
 HM/6222/N



Ca 10,0g
 HM/6222/R



Ca 10,0g
 HM/6222/P





Ca 10,0g
HM/6223/P



Ca 10,0g
HM/6223/R



Ca 19,0g
HM/6223/BC



Ca 15,0g
HM/6224/BC



Ca 6,0g
HM/6224/ER



Ca 6,0g
HM/6224/R



Ca 3,0g
HM/6224/P



Ca 8,0g
HM/6225/P



Ca 11,0g
HM/6225/R



Ca 7,0g
HM/6226/P



Ca 12,0g
HM/6226/ER



Ca 18,0g
HM/6226/BC



Ca 11,0g
HM/6226/R



Ca 3,0g
HM/6227/P



Ca 3,0g
HM/6227/R



Ca 4,5g
HM/6227/ER



Ca 23,0g
HM/6228/BC



Ca 17,0g
HM/6228/P2



Ca 14,0g
HM/6228/R



Ca 13,0g
HM/6228/P1



Ca 5,0g
HM/6229/P

Ca 19,0g
HM/6229/N



Ca 20,0g
HM/6229/BC



Ca 6,0g
HM/6229/ER



Ca 6,0g
HM/6229/R



Ca 19,0g
 HM/6230/BC



Ca 20,0g
 HM/6230/N

Ca 4,0g
 HM/6230/P



Ca 5,0g
 HM/6230/R



Ca 6,8g
 HM/6230/ER



Ca 7,0g
HM/6231/ER



Ca 4,2g
HM/6231/R



Ca 4,4g
HM/6231/P

Ca 16,0g
HM/6231/BC



Ca 6,0g
HM/6232/ER



Ca 5,0g
HM/6232/R



Ca 18x26; 3,8g
HM/6232/P



Ca 6,0g
 HM/6233/ER



Ca 4,0g
 HM/6233/P



Ca 4,2g
 HM/6233/R



Ca 4,0g
 HM/6234/P



Ca 7,0g
 HM/6234/R



Ca 17,0g
 HM/6233/BC





Ca 7,6g
HM/6235/ER



Ca 3,6g
HM/6235/P



Ca 15,0g
HM/6235/BC



Ca 4,6g
HM/6235/R



Ca 6,0g
HM/6236/ER



Ca 3,0g
HM/6236/P



Ca 4,0g
HM/6236/R

Triangle



Ca 7,0g
 HM/6237/P

Ca 33,0g
 HM/6237/N

Ca 6,0g
 HM/6237/ER

Ca 8,0g
 HM/6237/R



Ca 7,0g
HM/6238/P



Ca 27,0g
HM/6238/N



Ca 9,0g
HM/6238/R



Ca 4,0g
HM/6239/ER



Ca 20,0g
HM/6239/N

Ca 3,0g
 HM/6240/P

Ca 17,0g
 HM/6240/N

Ca 17,0g
 HM/6240/BC

Ca 6,0g
 HM/6240/ER

Ca 6,0g
 HM/6240/R



Ca 16,0g
HM/6241/BC



Ca 2,8g
HM/6241/P



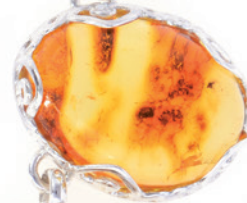
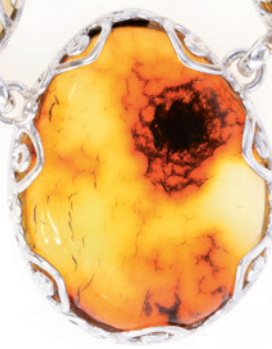
Ca 6,0g
HM/6241/R



Ca 6,0g
HM/6241/ER



Ca 28,0g
HM/6242/N



Ca 33,0g
HM/6242/BC



Ca 20,0g
 HM/6243/BC

Ca 3,5g
 HM/6243/P



Ca 5,0g
 HM/6243/R2



Ca 8,0g
 HM/6244/P



Ca 54,0g
 HM/6244/N



Ca 9,0g
 HM/6244/R



Ca 6,5g
 HM/6243/R1





Ca 12,0g
 HM/6245/P



Ca 10,0g
 HM/6245/R



Ca 17,0g
 HM/6245/BC1



Ca 62,0g
 HM/6245/BC2



Ca 10,0g
HM/6246/R



Ca 11,0g
HM/6246/P



Ca 22,0g
HM/6246/BC1

Ca 62,0g
HM/6246/BC2





Ca 7,2g
 ov 8x10
 HM/6247/BC



Ca 1,0g
 ov 10x12
 HM/6247/P

Ca 1,8g
 ov 8x10
 HM/6247/ER

Ca 1,8g
 ov 8x10
 HM/6248/ER

Ca 10,2g
 bead Ø 5
 HM/6248/N



Ca 4,8g
 bead Ø 5
 HM/6248/BC



Ca 35,0g
 HM/6249/BC



Ca 26,0g
 HM/6249/N



Ca 6,0g
 HM/6250/ER



Ca 4,0g
 HM/6250/P



Ca 6,0g
 HM/6251/P



Ca 8,0g
 HM/6251/R



Ca 5,0g
 HM/6252/P



Ca 7,0g
 HM/6252/R



Ca 6,0g
 HM/0201/ER



Ca 5,0g
 HM/0202/ER



Ca 7,0g
 HM/0203/ER



Ca 5,6g, Ø 9
HM/0301/CL



Ca 5,4g, ov 8x12
HM/0302/CL



Ca 3,8g, rect 4x8
HM/0303/CL



Ca 4,0g, sq 4
HM/0304/CL



Ca 4,2g, Ø 16
HM/0305/CL



Ca 5,4g, Ø 4, sq 4
HM/0306/CL



Ca 6,0g, ov 10x14
HM/0307/CL



Ca 4,0g, trd 4x6
HM/0308/CL



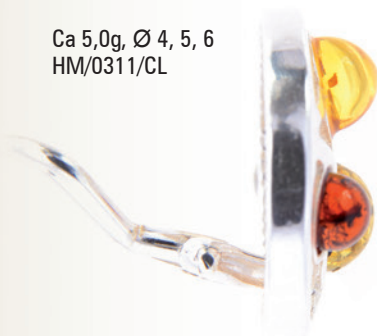
Ca 5,8g, Ø 9
HM/0309/CL

Ca 5,2g, ov 10x14
HM/0310/CL



Ca 4,8g, Ø 7
HM/0312/CL

Ca 5,0g, Ø 4, 5, 6
HM/0311/CL



Ca 9,8g, Ø 18
HM/0313/ER/CL



Ca 5,6g, Ø 10
HM/0314/CL





Ca 8,0g
HM/0401/CF



Ca 8,0g
HM/0402/CF



Ca 8,0g
HM/0403/CF



Ca 8,0g
HM/0404/CF



Ca 6,0g
HM/0405/CF



Ca 8,0g
HM/0406/CF



Ca 6,4g
trd 4x6
HM/0407/CF



Ca 6,0g
HM/0408/CF



Ca 6,6g
sq 4
HM/0409/CF



Ca 7,0g
HM/0410/CF



Ca 6,0g
HM/0411/CF



Ca 7,0g
HM/1201/R



Ca 6,0g
HM/1202/R



Ca 10,0g
HM/1203/R



Ca 5,0g
HM/1205/R



Ca 10,0g
HM/1204/R



Ca 9,0g
HM/1206/R



Ca 11,0g
HM/1207/R







Ca 21,0g
 HM/3201/BC



Ca 48,0g
 HM/3203/BC



Ca 44,0g
 HM/3204/BC



Ca 46,0g
 HM/3205/BC



Ca 19,0g
 HM/3202/BC



Ca 20,0g
 HM/3206/BC

Ca 15,0g
 HM/3207/BC



Ca 23,0g
 HM/3208/BC

Ca 17,0g
 HM/3209/BC



Ca 23,0g
 HM/3210/BC

Ca 25,0g
HM/4201/N

Ca 26,0g
HM/4202/N

Ca 25,0g
HM/4203/N



Ca 8,0g
 HM/5201/BR



Ca 12,0g
 HM/5202/BR-P



Ca 17,0g
 HM/5203/BR-P



21,0g
 HM/5204/BR



Ca 7,0g
 HM/5205/BR



Ca 16,0g
 HM/6253/SP



Ca 14,0g
 HM/6253/FR



Ca 19,0g
 HM/6253/KN



Ca 16,0g
 HM/6254/SP



Ca 19,0g
 HM/6254/KN

Dendrite Opal



Ca 18,0g
HM/6105/P



Ca 10,0g
HM/0401/CF



Ca 3,0g
HM/0402/ER



Ca 29,0g
HM/6105/BC2



Ca 14,0g
HM/6105/R

Polish Flintstone

Ca 24,0g
HM/6105/P



Ca 9,0g
HM/6205/ER



Ca 12,0g
HM/6205/R



Ca 66,0g
HM/6105/BC



Ca 24,0g
HM/6131/BC



Moldavite



Ca 28,0g
 HM/6107/BC



Ca 9,6g
 HM/6107/ER



Ca 10,0g
 HM/6212/P



Ca 6,8g
 HM/6107/R



Ca 6,8g
 HM/6212/R



Ca 9,0g
 HM/6107/P

Jasper Painted



Turmalined Quartz



Labradorite

Ca 17,0g
HM/6105/BC2



Ca 11,0g
HM/6105/R



Ca 15,0g
HM/6105/P



Blue Lace Agate

Ca 23,0g
HM/6105/BC2



Ca 18,0g
HM/6105/P



Cuprite



Ca 15,0g
HM/6105/ER



Ca 26,0g
HM/6107/P



Ca 49,0g
HM/6107/BC



Dendrite Agate

Ca 17,0g
HM/2215/P



Botswana Agate



Ca 16,0g
HM/6107/ER



Ca 12,0g
HM/6105/P

Ametyst



Ca 18,0g
HM/6105/ER



Ca 18,0g
HM/6105/BC2



AMBER
MARCIN BUZALSKI

Beniowskiego 59, 80-355 Gdańsk, Poland

Tel/Fax: +48 58 558-20-75, Mobile: +48 696-028-982

e-mail: amberco@wp.pl www.amberco.com.pl

